

**GENERAL NOTES**

- See shop drawings for hardware details.
- Reinforcing, hardware, and handling are dimensioned to the centerline unless otherwise noted (UNO).
- Hardware is top-in-form, UNO.
- Hardware finish is  Block  Galv.  Other
- Rebar finish is  Block  Galv.  Other
- WWF finish is  Block  Galv.  Other

**HARDWARE/HANDLING/REINFORCING**

QTY	MARK	DESCRIPTION
4	P3500	(1) PL 1 1/2" x 7" x 7" w/(1) 2 1/2" Ø HOLE & L 6"X6"X3/8"X6" & (2) #8 x 4'-8" REBAR
26	P3501	NMB A11W SPLICE SLEEVE
1	P3502	(1) PL3/4" X2'-5"X2'-10" W/(6) #4 X 6'-4" BENT BAR & (12) #8 X 7'-7" BENT BAR
1	P3503	(2) L 8"x 8"x 3/4"x 2'-10" w/(2) 1 1/2" Ø HOLES & (4) COIL ROD COUPLERS FOR 1 1/4" Ø ROD & (4) #5 (A706) BAR x 4'-4" & (1) PL 1"x10"x2'-10" w/(2) 1 1/2" Ø HOLES (4) 1 1/4" DIA. x 5'-0" COIL ROD
2	P3504	6" DIA. PVC SLEEVE x 3'-0"
8	P3507	Burke 22 Ton RL-23 Spread Anchor Item No. 79174
1	P3529	PL 1 3/8"x22"x2'-2" W/(9) 1" DIA X 4'-0" LONG DEFORMED BAR ANCHORS (DESIGNED & SUPPLIED BY OTHERS)

**REVISIONS**

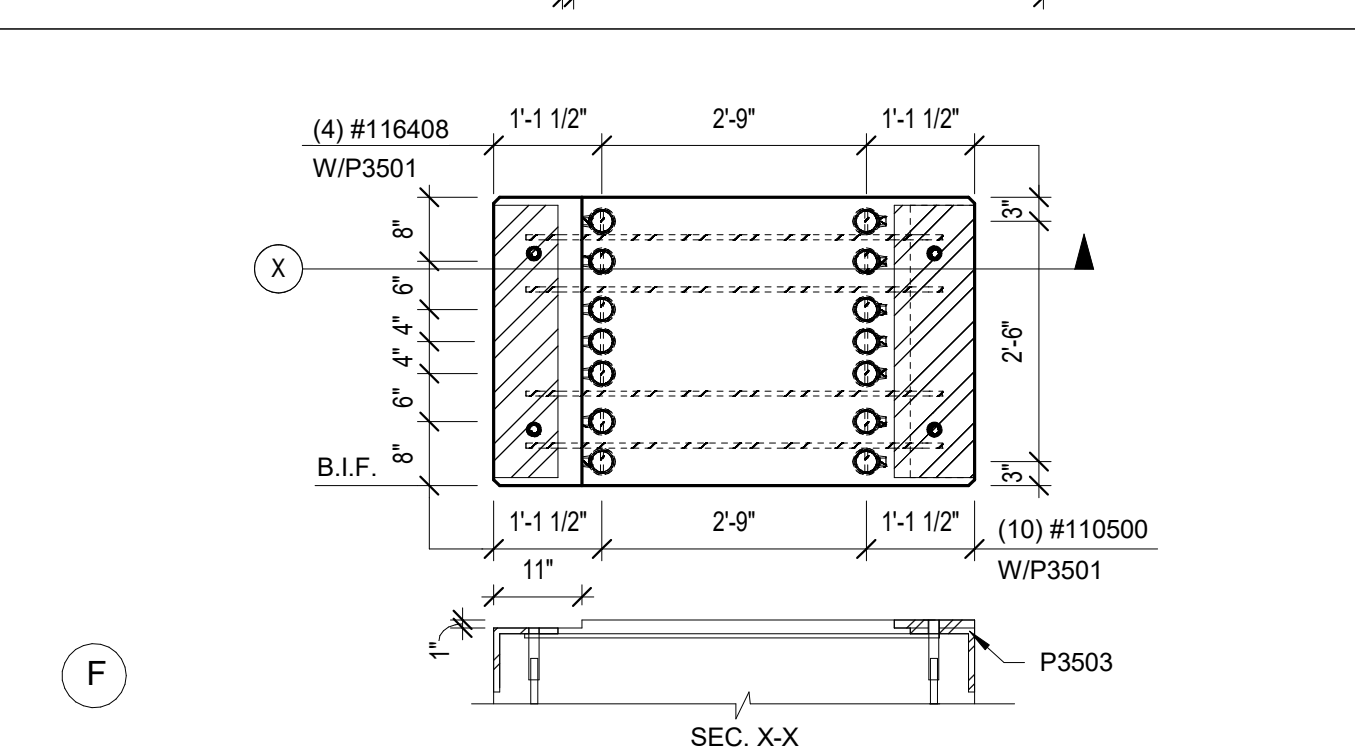
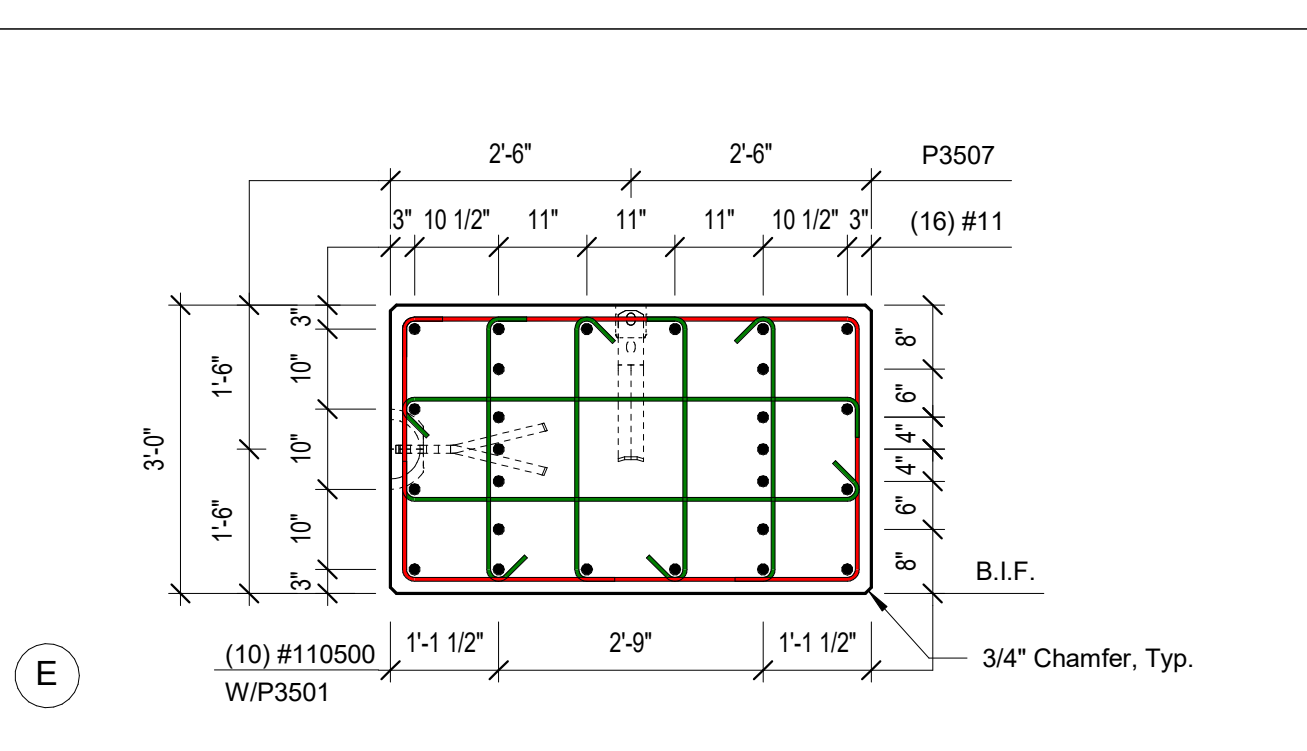
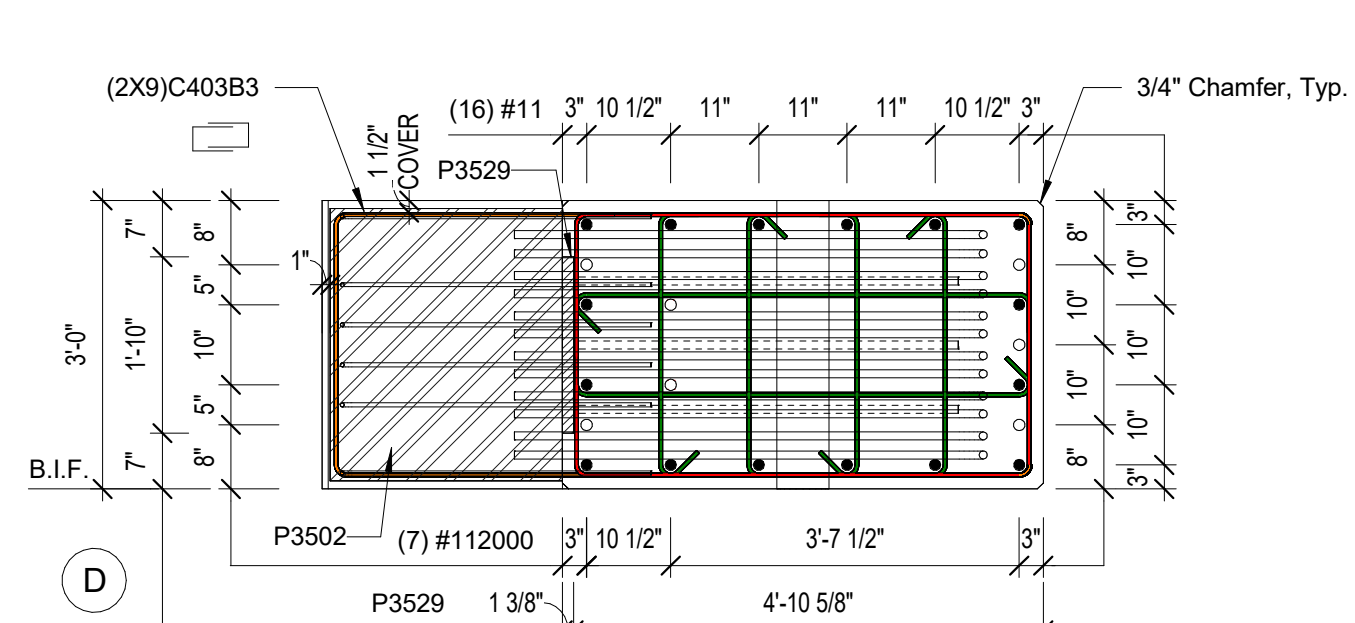
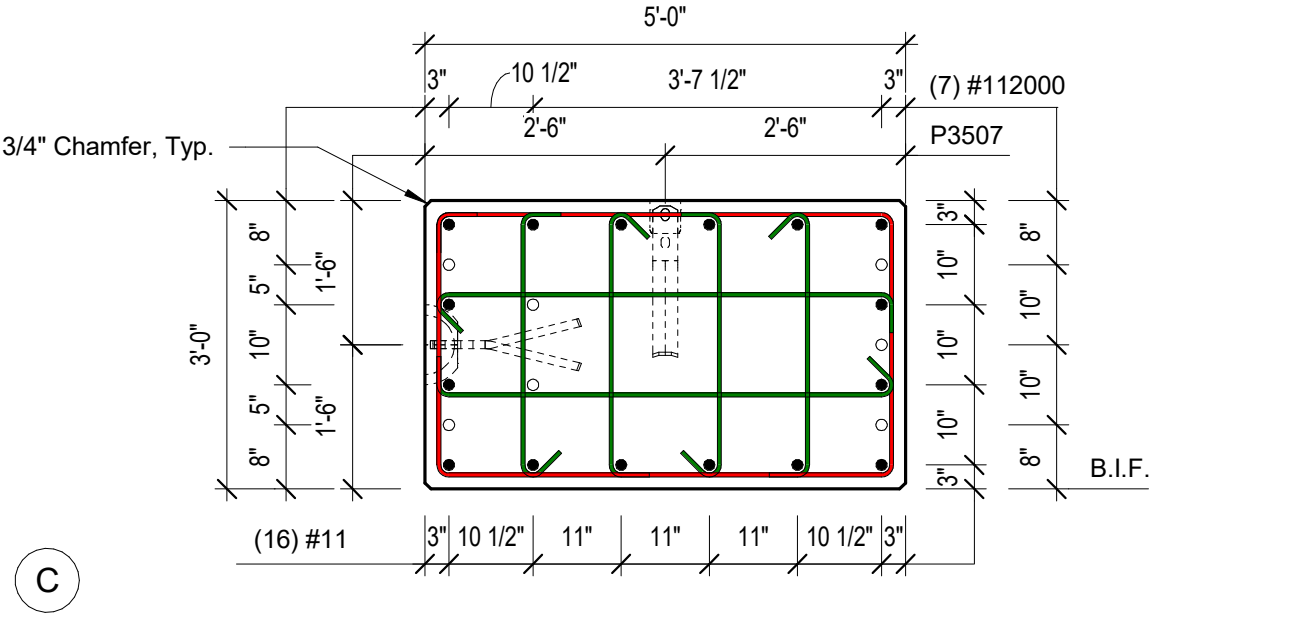
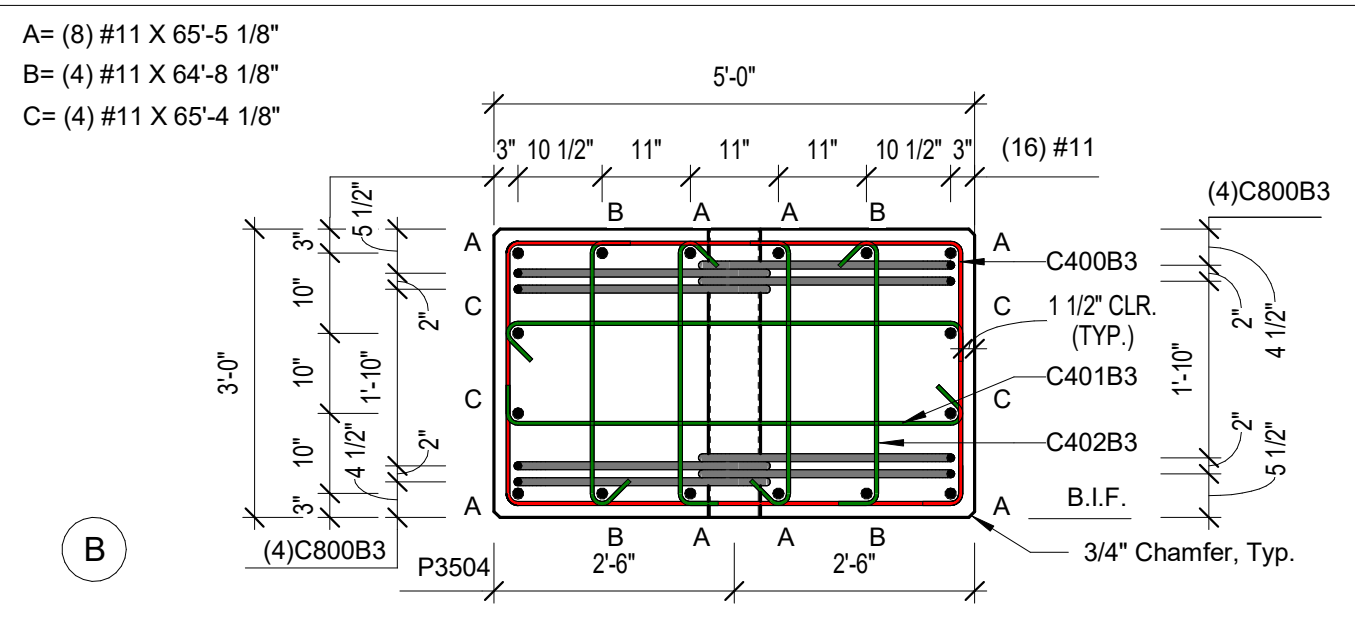
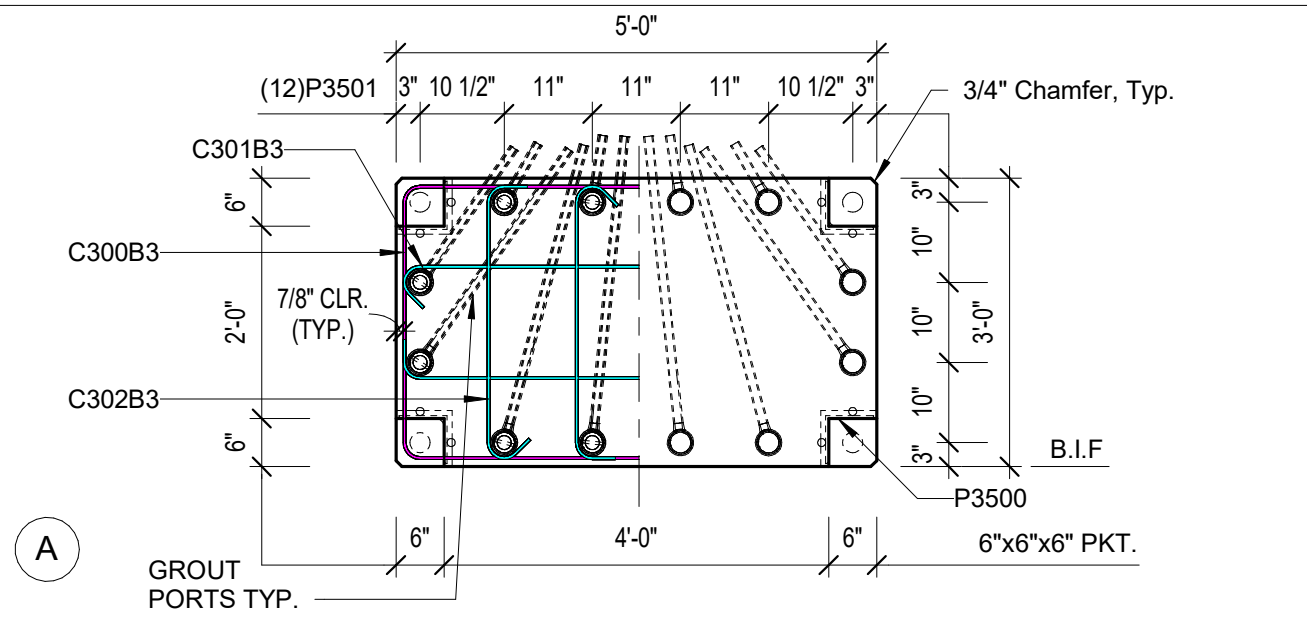
NO.	DATE	DESCRIPTION
0	11/23/2020	ISSUED FOR PRODUCTION

- RELEASE CONCRETE STRENGTH = 5000 psi
- 28 DAY CONCRETE STRENGTH = 8000 psi
- REINFORCING STEEL = ASTM 615 GRADE 60
- WWF STEEL = ASTM A185
- MINIMUM COVER 1"

**GIGA TESLA**  
Austin, Texas

DRWN: A.F	CuYd: 37.82
DATE: 11/09/20	Weight: 153,182
CHKR: H.N	SqFt: 331.9
DATE: 11/09/20	JobNo: 41069

QUANTITY	PIECE MARK
6	C-3000 (Sheet: 1 of 2)



**GENERAL NOTES**

- See shop drawings for hardware details.
- Reinforcing, hardware, and handling are dimensioned to the centerline unless otherwise noted (UNO).
- Hardware is top-in-form, UNO.
- Hardware finish is  Blcck  Galv.  Other
- Rebar finish is  Blcck  Galv.  Other
- WWF finish is  Blcck  Galv.  Other

**HARDWARE/HANDLING/REINFORCING**

QTY	MARK	DESCRIPTION
10	#110500	#11 X 5'-0" STRAIGHT
7	#112000	#11 X 20'-0" STRAIGHT
4	#116408	#11 X 64'-8 1/8" STRAIGHT
4	#116504	#11 X 65'-4 1/8" STRAIGHT
8	#116505	#11 X 65'-5 1/8" STRAIGHT
8	C300B3	#3 X 16'-3" BENT BAR
16	C301B3	#3 X 5'-8 1/4" BENT BAR
32	C302B3	#3 X 3'-8 1/4" BENT BAR
40	C400B3	#4 X 15'-10" BENT BAR
78	C401B3	#4 X 5'-7" BENT BAR
156	C402B3	#4 X 3'-7" BENT BAR
18	C403B3	#4 X 12'-0" BENT BAR
16	C800B3	#8 X 7'-10" BENT BAR

**REVISIONS**

NO.	DATE	DESCRIPTION
0	11/23/2020	ISSUED FOR PRODUCTION

- RELEASE CONCRETE STRENGTH = 5000 psi
- 28 DAY CONCRETE STRENGTH = 8000 psi
- REINFORCING STEEL = ASTM 615 GRADE 60
- WWF STEEL = ASTM A185
- MINIMUM COVER 1"

**GIGA TESLA**  
Austin, Texas

DRWN: A.F	CuYd: 37.82
DATE: 11/09/20	Weight: 153,182
CHKR: H.N	SqFt: 331.9
DATE: 11/09/20	JobNo: 41069

QUANTITY	PIECE MARK
6	C-3000 (Sheet: 2 of 2)